



Valley of the Sun Fainting Goat Show

Directions to Ramona Jr. Fairgrounds from US-395S

The following directions are recommended because a GPS will not always take you the most stress free way.

		Directions	Near town to intersection	Miles
	1	Take US-395 S		
	2	Take I-15 S*	Riverside	117.5 mi
Exit 22	3	Take Exit 22 for Camino Del Norte**	Escondido/ Rancho Bernardo	0.3 mi
	4	Turn left at Camino Del Norte		1.6 mi
	5	Camino Del Norte becomes Twin Peaks Rd	Poway	2.6 mi
	6	Turn right at Espola Rd***		0.8 mi
	7	Turn left at Poway Rd		2.6 mi
	8	Turn left at CA-67 N		9.2 mi
	9	Continue straight through town (CA-67 becomes CA-78/Main Street)	Ramona	0.5 mi
	10	Turn left at 5th Street.		0.2 mi
	11	Turn right at Aqua Lane. Fairground is on your left.		

* GPS will want you to cut off of the I-15 to take I-215 and then back to I-15. Just stay on I-15 and do not take I-215. I-215 is not a pleasant freeway.

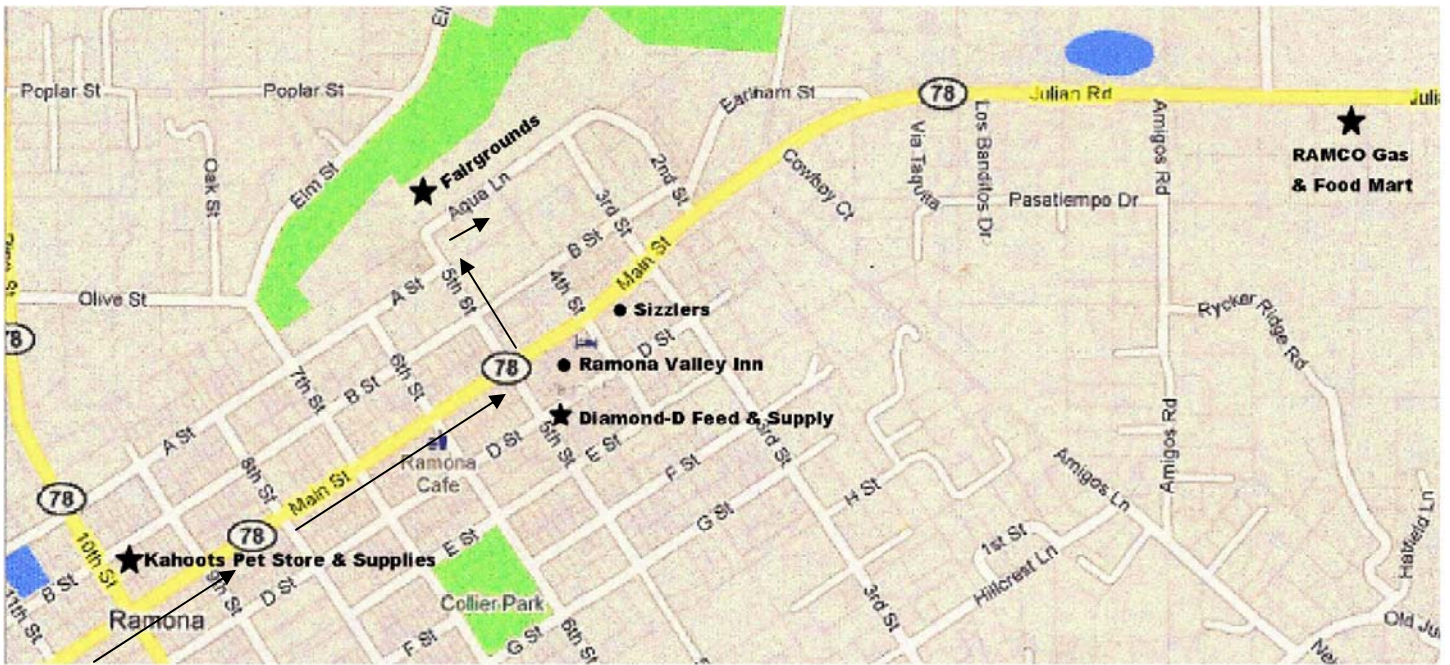
** GPS will want you to get off of the I-15 at CA-78. CA-78 is a very steep mountain road that twists and winds up the mountain and we do not recommend it if pulling a trailer. Going further down I-15 will allow you to come over the mountain at a friendlier place (less steep and a much shorter distance for the incline).

*** Espola Rd is near the end of Twin Peaks Road. You will go through several stop lights. When you pass Community Road, then Midway, you are only about 2-3 stop lights away. There will be a little gas station and strip mall on the right side corner with a donut shop and liquor store.

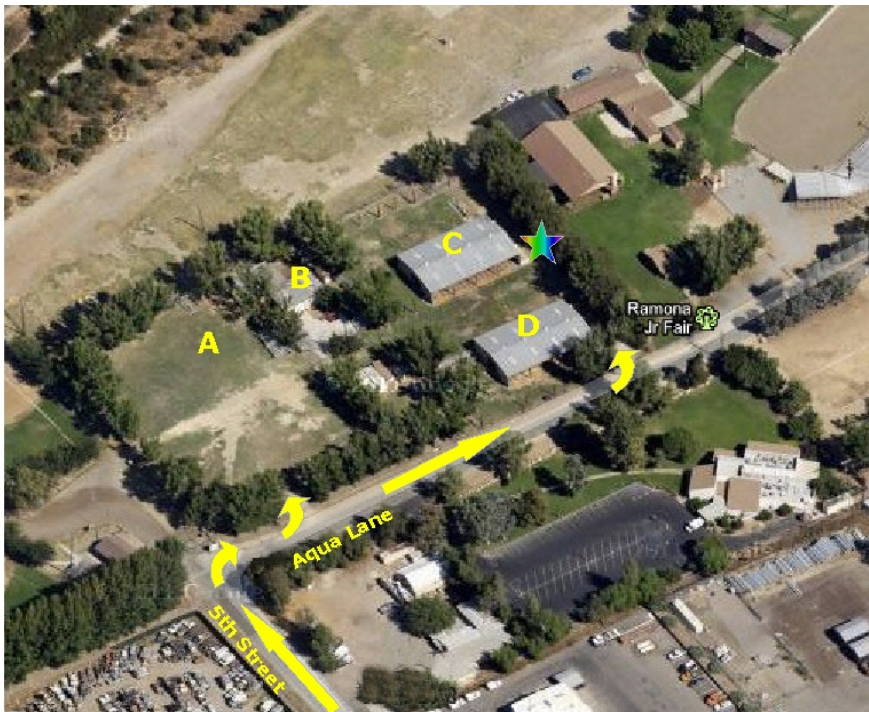


Valley of the Sun Fainting Goat Show

Ramona Area Map



Jr. Fairgrounds Area Map



Legend

- A = Camping Area
- B = Restrooms
- C = Goat Barn
- D = Show Barn
- ★ = Goat Loading/Unloading Zone